



Manoharbai Shikshan Prasarak Mandal Armori's

**MAHATMA GANDHI ARTS, SCIENCE &
LATE NASARUDDINBHAI PANJWANI COMMERCE
COLLEGE, ARMORI**

Dist. Gadchiroli (Maharashtra) 441 208

Affiliated to Gondwana University, Gadchiroli.

Re-accredited by NAAC 'A' with 3.24 CGPA

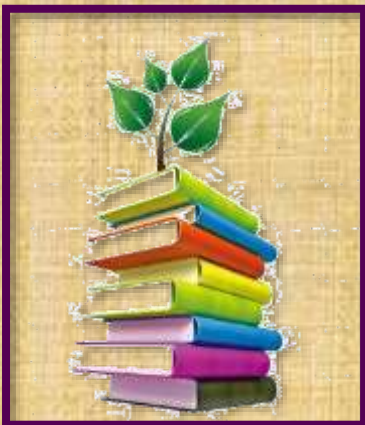
ANNUAL QUALITY ASSURANCE REPORT

AQAR : 2022-2023

CRITERION – I
CURRICULAR ASPECTS

METRIC NO: ~ 1.1.3.

METRIC NAME: ~Teachers of the Institution participate in the following activities related to curriculum development and assessment of the affiliating University and/are represented on the following academic bodies during the last completed academic calendar.



**Web: - mgcollegearmori.ac.in
e-mail: - mgcollege.armori@gmail.com
Phone: - 07137-266558**

1.1.3 Participation of teachers in various bodies of the Universities/Autonomous Colleges/ Other Colleges, such as BoS and Academic Council during the year.

Details of Participation of teachers in various bodies/activities


Academic Year 2022-2023		
Year	Name of teacher participated	Name of the body in which full time teacher participated
2022-2023	Dr. L. H. Khalsa	<ol style="list-style-type: none"> 1. Academic council/BoS of Affiliating university 2. Setting of question papers for UG/PG programs 3. Design and Development of Curriculum for Add on/ certificate/ Diploma Courses 4. Assessment /evaluation process of the affiliating University
2022-2023	Dr. Ramesh. M Thombre	<ol style="list-style-type: none"> 1. Academic council/BoS of Affiliating university 2. Setting of question papers for UG/PG programs 3. Design and Development of Curriculum for Add on/ certificate/ Diploma Courses 4. Assessment /evaluation process of the affiliating University
2022-2023	Dr. Chandrakant. P. Dorlikar	<ol style="list-style-type: none"> 1. Academic council/BoS of Affiliating university 2. Setting of question papers for UG/PG programs 3. Design and Development of Curriculum for Add on/ certificate/ Diploma Courses 4. Assessment /evaluation process of the affiliating University
2022-2023	Prof. Mohanlal. K. Ramteke	<ol style="list-style-type: none"> 1. Setting of question papers for UG/PG programs 2. Design and Development of Curriculum for Add on/ certificate/ Diploma Courses 3. Assessment /evaluation process of the affiliating University
2022-2023	Dr. Jayesh. N. Papadkar	<ol style="list-style-type: none"> 1. Setting of question papers for UG/PG programs 2. Design and Development of Curriculum for Add on/ certificate/ Diploma Courses 3. Assessment /evaluation process of the affiliating University
2022-2023	Prof. Shashikant. B. Gedam	<ol style="list-style-type: none"> 1. Setting of question papers for UG/PG programs

		<ol style="list-style-type: none"> 2. Design and Development of Curriculum for Add on/ certificate/ Diploma Courses 3. Assessment /evaluation process of the affiliating University
2022-2023	Prof. Dilip M. Ghonmode	<ol style="list-style-type: none"> 1. Setting of question papers for UG/PG programs 2. Assessment /evaluation process of the affiliating University
2022-2023	Dr. Ku. Seema. T. Nagdeve	<ol style="list-style-type: none"> 1. Setting of question papers for UG/PG programs 2. Design and Development of Curriculum for Add on/ certificate/ Diploma Courses 3. Assessment /evaluation process of the affiliating University
2022-2023	Dr. Dnyaneshwar. V. Thakare	<ol style="list-style-type: none"> 1. Setting of question papers for UG/PG programs 2. Design and Development of Curriculum for Add on/ certificate/ Diploma Courses 3. Assessment /evaluation process of the affiliating University
2022-2023	Prof. Sattendra. M. Sontakke	<ol style="list-style-type: none"> 1. Setting of question papers for UG/PG programs 2. Design and Development of Curriculum for Add on/ certificate/ Diploma Courses 3. Assessment /evaluation process of the affiliating University
2022-2023	Dr. Nomesh. N. Meshram	<ol style="list-style-type: none"> 1. Setting of question papers for UG/PG programs 2. Design and Development of Curriculum for Add on/ certificate/ Diploma Courses 3. Assessment /evaluation process of the affiliating University
2022-2023	Dr. Chhagan. D. Mungmode	<ol style="list-style-type: none"> 1. Setting of question papers for UG/PG programs 2. Design and Development of Curriculum for Add on/ certificate/ Diploma Courses 3. Assessment /evaluation process of the affiliating University
2022-2023	Prof. Parag. S.Meshram	<ol style="list-style-type: none"> 1. Setting of question papers for UG/PG programs 2. Design and Development of Curriculum for Add on/ certificate/ Diploma Courses 3. Assessment /evaluation process of the affiliating University
2022-2023	Dr. Vijay P. Gorde	<ol style="list-style-type: none"> 1. Academic council/BoS of Affiliating university 2. Setting of question papers for UG/PG programs

		<ul style="list-style-type: none"> 3. Design and Development of Curriculum for Add on/ certificate/ Diploma Courses 4. Assessment /evaluation process of the affiliating University
2022-2023	Dr. Vasanta I. Kahalkar	<ul style="list-style-type: none"> 1. Setting of question papers for UG/PG programs 2. Design and Development of Curriculum for Add on/ certificate/ Diploma Courses 3. Assessment /evaluation process of the affiliating University
2022-2023	Dr. Manoj. M. Thaore	<ul style="list-style-type: none"> 1. Academic council/BoS of Affiliating university 2. Setting of question papers for UG/PG programs 3. Design and Development of Curriculum for Add on/ certificate/ Diploma Courses 4. Assessment /evaluation process of the affiliating University
2022-2023	Dr. Priyadarshan. S. Ganvir	<ul style="list-style-type: none"> 1. Setting of question papers for UG/PG programs 2. Assessment /evaluation process of the affiliating University
2022-2023	Dr. Vijay. H. Raiwatkar	<ul style="list-style-type: none"> 1. Setting of question papers for UG/PG programs 2. Assessment /evaluation process of the affiliating University
2022-2023	Dr. Gajendra. M. Kadhav	<ul style="list-style-type: none"> 1. Setting of question papers for UG/PG programs 2. Design and Development of Curriculum for Add on/ certificate/ Diploma Courses 3. Assessment /evaluation process of the affiliating University
2022-2023	Prof. Ku. Sneha. Mohurle	<ul style="list-style-type: none"> 1. Setting of question papers for UG/PG programs 2. Design and Development of Curriculum for Add on/ certificate/ Diploma Courses 3. Assessment /evaluation process of the affiliating University
2022-2023	Prof. Gajanan. W.Borkar	<ul style="list-style-type: none"> 1. Setting of question papers for UG/PG programs 2. Design and Development of Curriculum for Add on/ certificate/ Diploma Courses 3. Assessment /evaluation process of the affiliating University
2022-2023	Prof. Anil. P. Raut	<ul style="list-style-type: none"> 1. Setting of question papers for UG/PG programs 2. Design and Development of Curriculum for Add on/ certificate/ Diploma Courses

		3. Assessment /evaluation process of the affiliating University
2022-2023	Prof. Vaibhav. P. Padole	1. Setting of question papers for UG/PG programs 2. Design and Development of Curriculum for Add on/ certificate/ Diploma Courses 3. Assessment /evaluation process of the affiliating University
2022-2023	Dr. Naresh. D. Bansod	1. Setting of question papers for UG/PG programs 2. Assessment /evaluation process of the affiliating University
2022-2023	Dr. Satish. S. Kola	1. Setting of question papers for UG/PG programs 2. Assessment /evaluation process of the affiliating University
2022-2023	Prof.Ku. Sunanda. B. Kumre	1. Setting of question papers for UG/PG programs 2. Design and Development of Curriculum for Add on/ certificate/ Diploma Courses 3. Assessment /evaluation process of the affiliating University
2022-2023	Prof. Nikhil A. Borode	1. Setting of question papers for UG/PG programs 2. Assessment /evaluation process of the affiliating University




PRINCIPAL
M.G. Arts. Science &
Late N.P. Commerce College
ARMORI, Dist. Gadchiroli